

Section 7 final additions & Conclusion

Everything you wanted to know about the Big Bang but were afraid to ask – section 7 of 7

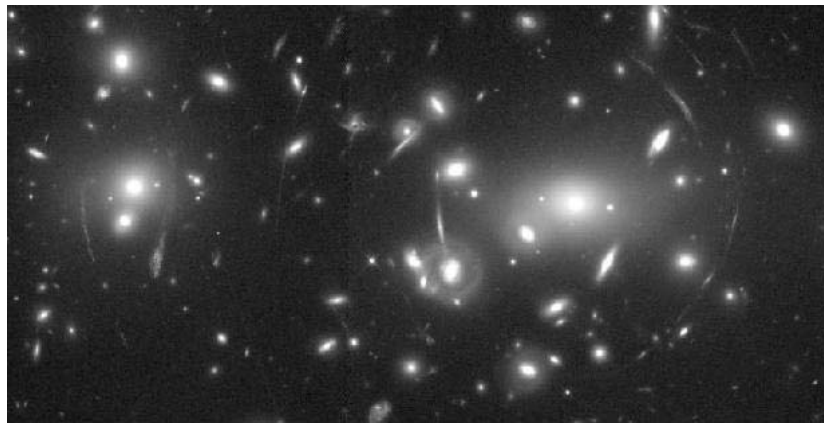
What's New [note section c ends between figures 4 & 5]

D. Tests proving general relativity limited to orbits of Mercury and other Earth bound satellites. [This does not prove homogeneity.]

E. Einstein reported in his last autobiography that he could not ever apply general relativity to the whole field [Universe], only to gravitationally bound systems like the orbit of Mercury. Nor can anyone else do so today.

[Again - this means **NO** homogeneity; **NO** “*cosmological principle*,” therefore there are **NO** known theoretical restrictions. Earth's location is unique!]

F. Space is not curved. See Einstein's Cross (at APOD) of multiple images surrounding a foreground galaxy. Only one image is possible in curved space. This multiple image proves that light bends in a gravitational field, not due to curved space. See also Abell's halo shown below: [From – (APOD) Astronomical picture of the day - Abell 2218.]



Abell 2218 <http://antwrp.gsfc.nasa.gov/apod/ap980111.html>

[Curved space could never explain the above halo. This halo denies Willem de Sitter's expanding space concept, which requires curved space as proof of his mathematical assumptions.]

G. $E = mc^2$ [Equation of the Big Bang IN energy filled SPACE !]
Matter created from light energy accomplished at Stanford in '97. $E = mc^2$ **Reversed !** See documentation next and review this paper's introduction “Strike a Match Energy”

Scientists Create Matter Out of Light

“Physicists at the Stanford Linear Accelerator Center (SLAC) in California have succeeded in producing particles of matter from very energetic collisions of light. The team, which included researchers

from Stanford University, the University of Rochester in New York, the University of Tennessee in Knoxville, and Princeton University in New Jersey, published an account of their work in the September 1, 1997, issue of the journal *Physical Review Letters*.” Source: Encarta Yearbook, Sept. 1997. http://leiwon.tripod.com/create_matter.htm

All evidence found here and elsewhere IS Contra to Milne’s *cosmological principle* and the concept of homogeneity. It was impossible for anyone on Earth to describe what one’s view would be from any other galaxy in our Universe with the state of 20th century’s technology.

Thoughts about the assumed Singleton forming in NOTHING:

1. The creation of Hydrogen and Helium required a very hot beginning; with basic building blocks of matter moving at near infinite speeds. This is required. [But not the following.]
2. To construct a singleton, a pinpoint of basic matter sufficient to supply all the needs of our 100+ billion galaxy Universe means that such dense matter would have no room for the near infinite motion required to create Hydrogen and Helium.

[Infinite motion and infinite density together as a singleton is impossible – a Paradox!]

3. We know of no means to compress atoms into such a dense point as the theoretical singleton requires except a huge gravitational field. “Squeeze on any **solid** object, and it will push back. **No apparatus on Earth can compress water (or steel) to half its volume.**” From Dr. Vogt’s lecture notes at:
<http://astronomy.nmsu.edu/nicole/teaching/ASTR110/lectures/lecture24/slide03.html>
or in section 5, third paragraph, sixth sentence at -
<http://super.colorado.edu/~astr1020/15body.html>

4. Out of NOTHING, where did nature get a huge gravitational field and all the material necessary to produce a singleton?

And then, why should this dense mass explode?

[Not possible out of NOTHING – *that Hindu myth used by Friedman*. See next entry for the singleton’s replacement.]

Thoughts on the existence of the ARENA OF SPACE necessary to incur a Big Bang:

Currently our Universe is comprised of 100 billion galaxies the official count. Unofficially the Hubble ultra-deep field makes a case for a count of about 500 billion.

Couple this with the fact that matter is indestructible and that atomic conversion of energy into matter is not just theoretical but proved at Stanford. See again page 20 or:
http://leiwentripod.com/create_matter.htm

It now requires no great leap of faith to recognize that the ARENA OF SPACE held the equivalent of our Universe in some as yet undetected form of energy. And that both exist notwithstanding the fact that we have no technology available to measure at this time.

[Then this huge wild volume of energy in this ARENA OF SPACE exhausted every possible turbulent pattern of motion till finally this nameless energy converged upon a single point, thus setting the conditions necessary for the conversion of energy into matter (as proved by Stanford) thereby igniting the Big Bang IN energy filled SPACE.] Strike a Match Energy

Thoughts on the CMB temperature uniformity that cosmologists ponder with disbelief over [disbelief due to their assumption that our Universe has no center or edge and was created from NOTHING.]:

1. To deny the ability for the CMB's ions to lose motion uniformly in different locations of space is for scientists to deny the replication of experimental outcomes.
2. If a thousand scientists performed the same experiment using identical equipment, they should get identical results. The same with nature. A field of growing wheat produces identical results when all elements are alike. Same with the CMB's identical temperature in every direction. Review figure 2 [page 8] above.

[Note: an explosion IN SPACE is by far the simplest explanation that can explain this equality and Earth's central location vis-à-vis the CMB, quasar, and all other graphs presented.]

3. So, the Big Bang's Thermonuclear Conversion of Energy found in the Arena of Space shoots out the equivalent of a cannon's smoke ring when fired. Except that instead of a smoke ring it is a spherical CMB smoke ring of out rushing matter, going out at 95-99% of the speed of light, now some 13.7 billion light years away in EVERY direction. With equal distance we have equal temperature. We have equal distance because Earth is moving so slow, relative to all celestial objects.

Push = Distribution

[Consequently, we Earthlings are in a very unique location – right next to the epicenter of the Big Bang explosion – the Center

of our Universe.] Further evidence is our **isotropic** or similar layered onion-like view in all directions from Earth of celestial objects Due to an Explosion IN Space ! Strike A Match Energy.

Timing = Age of the Universe:

Time for the spherical CMB smoke ring to reach this viewed location requires a minimum of 13.7 billion years and another 13.7 for the CMB's radiation to return to us the very slow moving Earth. That equals a round trip of 27.4 billion years minimum – the minimum age of our Universe.

Earth's view of the CMB's radiation is like seeing a family photo of a 13.7 year old child that took 13.7 years to deliver to us Earthlings a 27.4 year old recipient.

[Plenty of time now for structures to form. The youngest celestial object in the Universe that we can see, is older than the 13.7 billion year old CMB, thereby giving the force of gravity billions of years of unhurried construction to form galaxies.]

Very slow Earth

Conclusion:

This assembly of the latest related HiTech findings allows me to put all the above evidence together in one logical analysis and the conclusion must be a Big Bang Thermonuclear Conversion of Energy found in the pre-existing huge energy-filled arena of space. [Dropping all those unsupported assumptions.] **And this puts the very slow moving Earth virtually right in the Center of our 27.4+ billion year old Universe.**

Results from an Explosion in the Arena of Space

Very slow Earth – Strike a Match Energy –

Push = Distribution

The Axis of Evil

Current Cosmology :

Sean Carroll, Assistant Professor in Physics at the University of Chicago wrote in a web article for the Cosmo-02 workshop held at the Adler Planetarium: **“We know much and we understand nothing.”**

<http://www-news.uchicago.edu/releases/02/020806.cosmo-02.shtml>

That point was reiterated in a February 21, 2003 Chicago Tribune editorial titled *“The end of the universe, cont'd.”* by this: **“We know much and understand little,”** says University of Chicago cosmologist Michael Turner.”

WHAT IS SCIENTIFICALLY ACCEPTABLE

Richard Feynman on science:

"In general we look for a new law by the following process.

- First we guess it.
- Then we compute the consequences of the guess to see what would be implied if this law that we guessed is right.
- Then we compare the result of the comparison to nature, with experiment or experience, compare it directly with observation, to see if it works.
- If it disagrees with experiment [or experience or observation] it is wrong.

"In that simple statement is the key to science. It does not make any difference how beautiful your guess is. It does not make any difference how smart you are, who made the guess, or what his name is - if it disagrees with experiment it is wrong."

[From Richard Feynman A Life In Science, DUTTON, 1997.]

NOW is the time for cosmology to PRUNE its mythological roots (20th century assumptions) and graft real HiTech observations.

Any science based on misinformation is liable to be faulty.

References: A. Einstein, *Out Of My Later Years*, p.48 (Philosophical Library, NY, 1950).